

FOR MORE DETAILS PLEASE LOG ON TO
www.asstones.com

Get in Touch :

AS STONES

📍 A-12, R.K. Colony, Bhilwara - 311001, (Rajasthan) (INDIA)

☎ +91 77278 65833

✉ info@asstones.com

🌐 sales@asstones.com



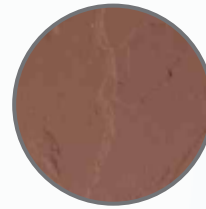
AS Stones
Bhilwara, Rajasthan (INDIA)



SURFACE FINISHES

Natural

Natural is the untreated surface which comes by splitting the rocks along the line. The natural cleft makes the surface riven and of undulating texture.



Sandblasted

This finish makes the surface uniform but textured, giving it a matt look. It is achieved when surface is exposed to pressurize flow of sand and water.



Sawn

Sawn Surface is done by machine that produces a flat but raw stone. Generally used for gate entries, patios, landscape design applications, and wall panels.



Polished

Polishing makes stone surface glossy and extremely smooth. This is done by using abrasive and shine comes due to reflection of stone crystals.



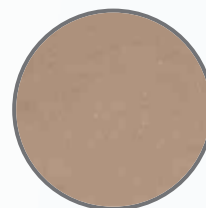
Brushed

This finish attains by rubbing the stone surface with hard bristle brushes. The surface features a worn-down look and simulates natural wear over time.



Honed Finish

A honed surface provides a flat, matte or satin finish creating a more informal and softer look. The finish shows fewer scratches, and requires very little maintenance.



Flamed

A flamed finish is achieved by heating the surface of the stone to extreme temperatures, followed by rapid cooling. The surface of the stone pops and chips leaving a rough, unrefined texture and making it slip resistant.



EDGE FINISHES

Handcut

This edge is cut manually by chisel and hammer giving it a natural look. It is more suitable for landscaping and outdoor areas.



Chiseled

Chiseling is done by hand on kerbs (making the edge smooth yet natural), blocksteps (straightening the edge) and wallstones (giving the feel of natural rock).



Tumbled

It gives a smooth edge with natural antique look.



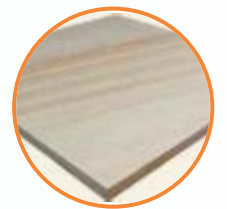
Chamfered

Chamfering is done by both hand and machine to make an edge angled. It is mainly done on kerbs, blocks, and slabs.



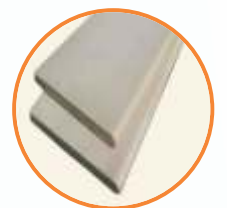
Sawn

Sawn edge is done by machine that makes it straight and smooth. It is suitable for tiling applications where inter-tile space is minimum.



Bull Nosed

Bull nosed is done by both machine and hand. It makes the edges rounded and is done on the number of sides which application demand. (steps, table-top, swimming pool etc.)



SAND STONE

Product Overview

♦ COBBLES
loose / crated

♦ SLABS

natural surface & edges hand - cut, vein cut, surface sandblasted & bottom calibrated all sides sawn & surface polished surface brushed, flamed, shot blasted & honed tumbled bull nosed, clambering

♦ PALISADES
Wallstones

♦ KERBS
chamfering by hand or machine

♦ CRAZY PAVING
polygonal slabs with 2 - 5 pcs per sqm.

♦ GARDEN / DECORATIVE ARTICLES





Grey

Kandla Grey is a kind of sandstone in which the quartz grains are cemented together by secondary silica calcite. The presence of minor color tonal variations make it a unique and attractive building stone. This type of sandstone are known for its high water absorption ability, least slippery and therefore used in cold countries or that experience rains. Kandla grey is used often in pavements, patios, pathways, wall claddings, and fireplace and in floor tiles and slabs. The tenacity and durability of the stone gives it a whopping popularity. The stone is also resistant to weathering and climatic extremities. The stone is certainly a wise investment. The beauty of Kandla grey is such that it would enthrall generations to come.

more info please log on : www.asstones.com



Brown

Brown is a kind of sandstone in which the quartz grains are cemented together by secondary silica calcite. The presence of minor color tonal variations make it a unique and attractive building stone. This type of sandstone are known for its high water absorption ability, least slippery and therefore used in cold countries or that experience rains. Kandla grey is used often in pavements, patios, pathways, wall claddings, and fireplace and in floor tiles and slabs. The tenacity and durability of the stone gives it a whopping popularity. The stone is also resistant to weathering and climatic extremities. The stone is certainly a wise investment. The beauty of Kandla grey is such that it would enthrall generations to come.

more info please log on : www.asstones.com





Red

Red is a kind of sandstone in which the quartz grains are cemented together by secondary silica calcite. The presence of minor color tonal variations make it a unique and attractive building stone. This type of sandstone are known for its high water absorption ability, least slippery and therefore used in cold countries or that experience rains. Kandla grey is used often in pavements, patios, pathways, wall claddings, and fireplace and in floor tiles and slabs. The tenacity and durability of the stone gives it a whopping popularity. The stone is also resistant to weathering and climatic extremities. The stone is certainly a wise investment. The beauty of Kandla grey is such that it would enthrall generations to come.

more info please log on : www.asstones.com



Woodland

Woodland is a kind of sandstone in which the quartz grains are cemented together by secondary silica calcite. The presence of minor color tonal variations make it a unique and attractive building stone. This type of sandstone are known for its high water absorption ability, least slippery and therefore used in cold countries or that experience rains. Kandla grey is used often in pavements, patios, pathways, wall claddings, and fireplace and in floor tiles and slabs. The tenacity and durability of the stone gives it a whopping popularity. The stone is also resistant to weathering and climatic extremities. The stone is certainly a wise investment. The beauty of Kandla grey is such that it would enthrall generations to come.

more info please log on : www.asstones.com





Dholpur Beige

Dholpur Beige is a kind of sandstone in which the quartz grains are cemented together by secondary silica calcite. The presence of minor color tonal variations make it a unique and attractive building stone. This type of sandstone are known for its high water absorption ability, least slippery and therefore used in cold countries or that experience rains. Kandla grey is used often in pavements, patios, pathways, wall claddings, and fireplace and in floor tiles and slabs. The tenacity and durability of the stone gives it a whopping popularity. The stone is also resistant to weathering and climatic extremities. The stone is certainly a wise investment. The beauty of Kandla grey is such that it would enthrall generations to come.

more info please log on : www.asstones.com

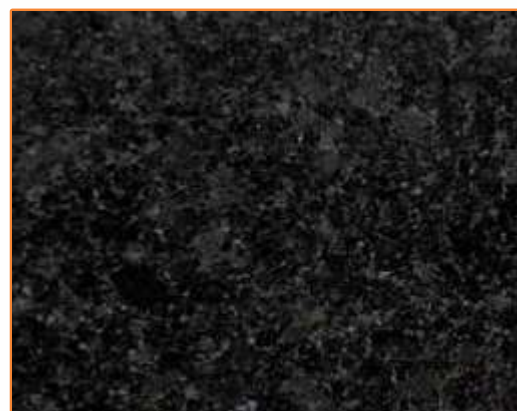


GRANITE

Product Overview

- ♦ COBBLES
loose / crated
- ♦ SLABS
natural surface & edges hand - cut, vein cut, surface sandblasted & bottom calibrated all sides sawn & surface polished surface brushed , flamed , shot blasted & honed tumbled bull nosed , clambering
- ♦ PALISADES
Wallstones
- ♦ KERBS
chamfering by hand or machine
- ♦ CRAZY PAVING
polygonal slabs with 2 - 5 pcs per sqm.
- ♦ GARDEN / DECORATIVE ARTICILES





Rajasthan Black Granite

The word "granite" comes from the Latin granum, a grain, in reference to the coarse-grained structure of such a holocrystalline rock. The term 'granite' also applies to a group of intrusive igneous rocks with similar textures and slight variations on composition and origin. These rocks mainly consist of feldspar, quartz, mica, and amphibole minerals. These form interlocking somewhat equigranular matrix of feldspar and quartz with scattered darker biotite mica and amphibole (often hornblende) peppering the lighter color minerals.

more info please log on : www.asstones.com



Crystal Yellow

The word "granite" comes from the Latin granum, a grain, in reference to the coarse-grained structure of such a holocrystalline rock. The term 'granite' also applies to a group of intrusive igneous rocks with similar textures and slight variations on composition and origin. These rocks mainly consist of feldspar, quartz, mica, and amphibole minerals. These form interlocking somewhat equigranular matrix of feldspar and quartz with scattered darker biotite mica and amphibole (often hornblende) peppering the lighter color minerals.

more info please log on : www.asstones.com





Monte Cristo

The word "granite" comes from the Latin granum, a grain, in reference to the coarse-grained structure of such a holocrystalline rock. The term 'granite' also applies to a group of intrusive igneous rocks with similar textures and slight variations on composition and origin. These rocks mainly consist of feldspar, quartz, mica, and amphibole minerals. These form interlocking somewhat equigranular matrix of feldspar and quartz with scattered darker biotite mica and amphibole (often hornblende) peppering the lighter color minerals.

more info please log on : www.asstones.com



Rosy Pink Granite

The word "granite" comes from the Latin granum, a grain, in reference to the coarse-grained structure of such a holocrystalline rock. The term 'granite' also applies to a group of intrusive igneous rocks with similar textures and slight variations on composition and origin. These rocks mainly consist of feldspar, quartz, mica, and amphibole minerals. These form interlocking somewhat equigranular matrix of feldspar and quartz with scattered darker biotite mica and amphibole (often hornblende) peppering the lighter color minerals.

more info please log on : www.asstones.com





Tiger Skin

The word "granite" comes from the Latin granum, a grain, in reference to the coarse-grained structure of such a holocrystalline rock. The term 'granite' also applies to a group of intrusive igneous rocks with similar textures and slight variations on composition and origin. These rocks mainly consist of feldspar, quartz, mica, and amphibole minerals. These form interlocking somewhat equigranular matrix of feldspar and quartz with scattered darker biotite mica and amphibole (often hornblende) peppering the lighter color minerals.

more info please log on : www.asstones.com



Bala Flower

The word "granite" comes from the Latin granum, a grain, in reference to the coarse-grained structure of such a holocrystalline rock. The term 'granite' also applies to a group of intrusive igneous rocks with similar textures and slight variations on composition and origin. These rocks mainly consist of feldspar, quartz, mica, and amphibole minerals. These form interlocking somewhat equigranular matrix of feldspar and quartz with scattered darker biotite mica and amphibole (often hornblende) peppering the lighter color minerals.

more info please log on : www.asstones.com





Red Granite

The word "granite" comes from the Latin granum, a grain, in reference to the coarse-grained structure of such a holocrystalline rock. The term 'granite' also applies to a group of intrusive igneous rocks with similar textures and slight variations on composition and origin. These rocks mainly consist of feldspar, quartz, mica, and amphibole minerals. These form interlocking somewhat equigranular matrix of feldspar and quartz with scattered darker biotite mica and amphibole (often hornblende) peppering the lighter color minerals.

more info please log on : www.asstones.com



Platinum White

The word "granite" comes from the Latin granum, a grain, in reference to the coarse-grained structure of such a holocrystalline rock. The term 'granite' also applies to a group of intrusive igneous rocks with similar textures and slight variations on composition and origin. These rocks mainly consist of feldspar, quartz, mica, and amphibole minerals. These form interlocking somewhat equigranular matrix of feldspar and quartz with scattered darker biotite mica and amphibole (often hornblende) peppering the lighter color minerals.

more info please log on : www.asstones.com





Jhasi Red

The word "granite" comes from the Latin granum, a grain, in reference to the coarse-grained structure of such a holocrystalline rock. The term 'granite' also applies to a group of intrusive igneous rocks with similar textures and slight variations on composition and origin. These rocks mainly consist of feldspar, quartz, mica, and amphibole minerals. These form interlocking somewhat equigranular matrix of feldspar and quartz with scattered darker biotite mica and amphibole (often hornblende) peppering the lighter color minerals.

more info please log on : www.asstones.com

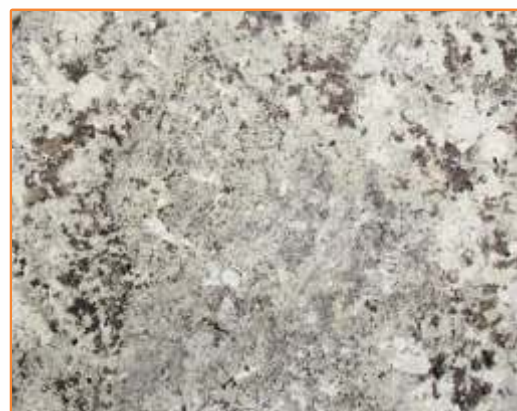


Majestic Black

The word "granite" comes from the Latin granum, a grain, in reference to the coarse-grained structure of such a holocrystalline rock. The term 'granite' also applies to a group of intrusive igneous rocks with similar textures and slight variations on composition and origin. These rocks mainly consist of feldspar, quartz, mica, and amphibole minerals. These form interlocking somewhat equigranular matrix of feldspar and quartz with scattered darker biotite mica and amphibole (often hornblende) peppering the lighter color minerals.

more info please log on : www.asstones.com





Alaska White

The word "granite" comes from the Latin granum, a grain, in reference to the coarse-grained structure of such a holocrystalline rock. The term 'granite' also applies to a group of intrusive igneous rocks with similar textures and slight variations on composition and origin. These rocks mainly consist of feldspar, quartz, mica, and amphibole minerals. These form interlocking somewhat equigranular matrix of feldspar and quartz with scattered darker biotite mica and amphibole (often hornblende) peppering the lighter color minerals.

more info please log on : www.asstones.com



MARBLE



Product Overview

- ♦ COBBLES
loose / crated
- ♦ SLABS
natural surface & edges hand - cut, vein cut, surface sandblasted & bottom calibrated all sides sawn & surface polished surface brushed , flamed , shot blasted & honed tumbled bull nosed , clambering
- ♦ PALISADES
Wallstones
- ♦ KERBS
chamfering by hand or machine
- ♦ CRAZY PAVING
polygonal slabs with 2 - 5 pcs per sqm.
- ♦ GARDEN / DECORATIVE ARTICLES

Green Marble



In Green Marble color tones and pencil-thin veins will vary between large tile jobs, multiples tiles should be viewed from multiple pallets to verify current coloration. It is a common characteristic for this stone to have voids in the raw material. Before it reaches the polishing stages, these voids are filled with a polyester resin. Depending on how deep the void is, the resin may shrink as it dries, which will leave the surface of the filled area slightly lower than the rest. This does not affect the durability, maintenance or beauty of the stone.

more info please log on : www.asstones.com





White

In White Marble color tones and pencil-thin veins will vary between large tile jobs, multiples tiles should be viewed from multiple pallets to verify current coloration. It is a common characteristic for this stone to have voids in the raw material. Before it reaches the polishing stages, these voids are filled with a polyester resin. Depending on how deep the void is, the resin may shrink as it dries, which will leave the surface of the filled area slightly lower than the rest. This does not affect the durability, maintenance or beauty of the stone.

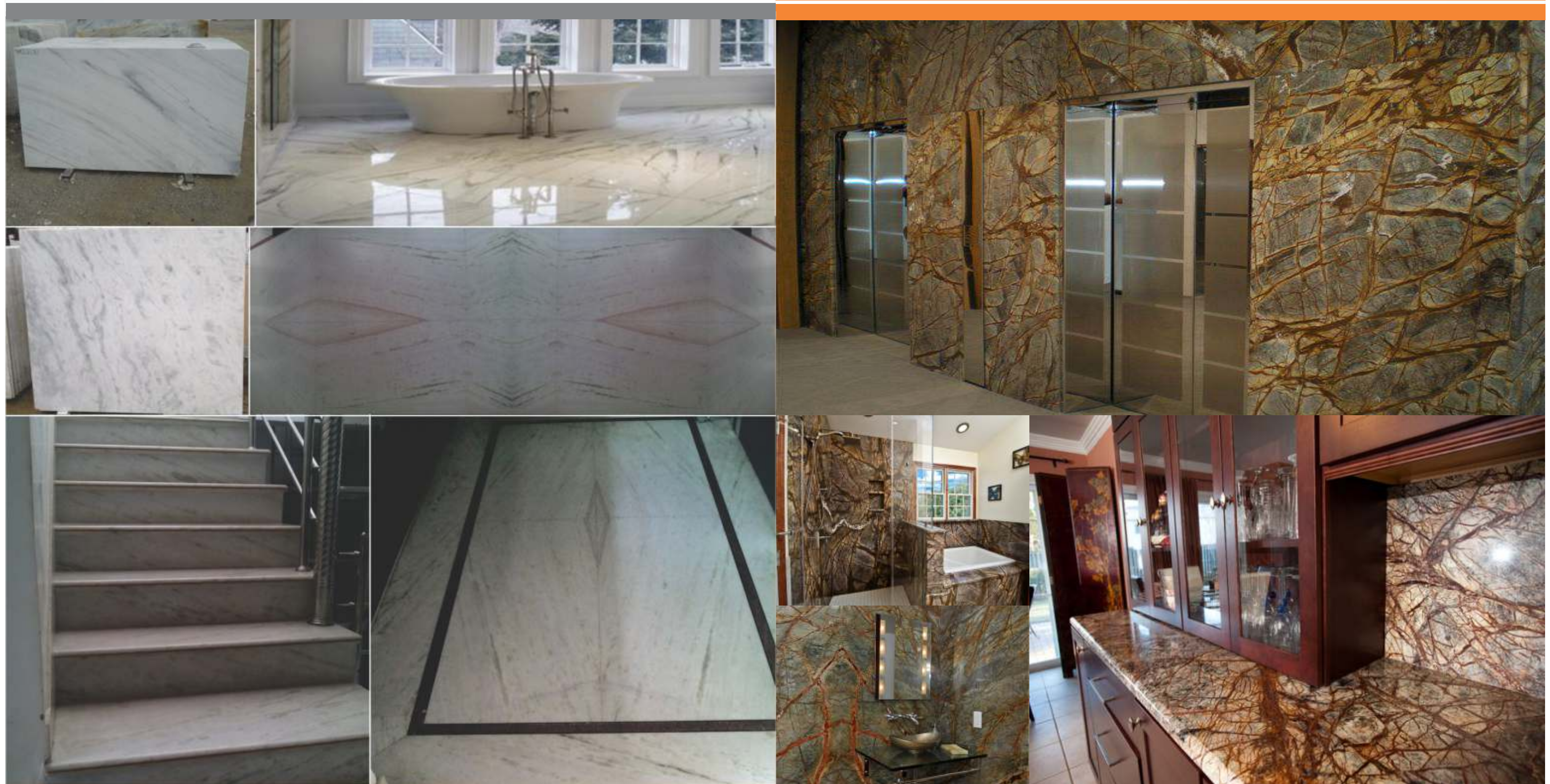
more info please log on : www.asstones.com



Brown Marble

In Brown Marble color tones and pencil-thin veins will vary between large tile jobs, multiples tiles should be viewed from multiple pallets to verify current coloration. It is a common characteristic for this stone to have voids in the raw material. Before it reaches the polishing stages, these voids are filled with a polyester resin. Depending on how deep the void is, the resin may shrink as it dries, which will leave the surface of the filled area slightly lower than the rest. This does not affect the durability, maintenance or beauty of the stone.

more info please log on : www.asstones.com



KOTA STONE

Product Overview

- ♦ COBBLES
loose / crated
- ♦ SLABS
natural surface & edges hand - cut, vein cut, surface sandblasted & bottom calibrated all sides sawn & surface polished surface brushed , flamed , shot blasted & honed tumbled bull nosed , clambering
- ♦ PALISADES
Wallstones
- ♦ KERBS
chamfering by hand or machine
- ♦ CRAZY PAVING
polygonal slabs with 2 - 5 pcs per sqm.
- ♦ GARDEN / DECORATIVE ARTICLES





Product Overview

- ♦ COBBLES
loose / crated
- ♦ SLABS
natural surface & edges hand - cut, vein cut, surface sandblasted & bottom calibrated all sides sawn & surface polished surface brushed , flamed , shot blasted & honed tumbled bull nosed , clambering
- ♦ PALISADES
Wallstones
- ♦ KERBS
chamfering by hand or machine
- ♦ CRAZY PAVING
polygonal slabs with 2 - 5 pcs per sqm.
- ♦ GARDEN / DECORATIVE ARTICLES

RIVER SAND & PEBBLES

